



# Pinto Abalone Recovery

## Project Partners:

- Puget Sound Restoration Fund
- University of Washington, School of Aquatic & Fishery Sciences
- Washington Department of Fish & Wildlife
- Western Washington University, Shannon Point Marine Center
- NOAA Mukilteo Research Station
- Baywater, Inc.
- Taylor Shellfish Farms
- Jamestown S'Klallam Tribe
- Northwest Straits Commission

## Funders:

- NOAA Species of Concern
- WDFW
- The Russell Family Foundation
- SeaDoc Society
- Washington Sea Grant

**PUGET SOUND  
RESTORATION FUND**

590 Madison Ave N  
Bainbridge Island, WA 98110  
206-780-6947  
[www.restorationfund.org](http://www.restorationfund.org)

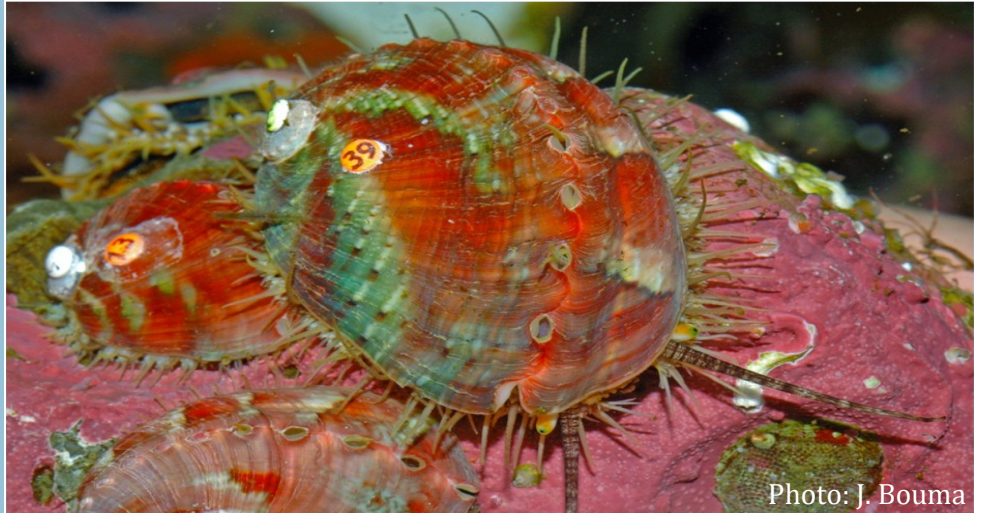


Photo: J. Bouma

Since 1992, Pinto abalone populations in Washington State have declined by more than 80% and are considered on their way to extinction. Efforts are underway to save this iconic and ecologically important marine snail.

Abalone are being raised in hatcheries in order to better understand abalone reproduction and produce sufficient numbers of abalone to supplement and restore natural populations.

In 2009, 1200 abalone were introduced to reefs in the San Juan Islands in the state's first restoration outplant of pinto abalone. In 2011 an additional 2100 animals were outplanted to these rocky reefs.

Numerous abalone studies are on-going to understand the best methods by which hatchery-raised animals should be outplanted into the wild. Additionally, scientists are studying the genetics of abalone in Washington State to identify the best methods to maintain animal and population health throughout the outplanting process.

Visit [www.pintoabalone.org](http://www.pintoabalone.org) for more information.

